



**ULMATEC
PYRO**

PYRO SERVICE AND AFTERMARKET

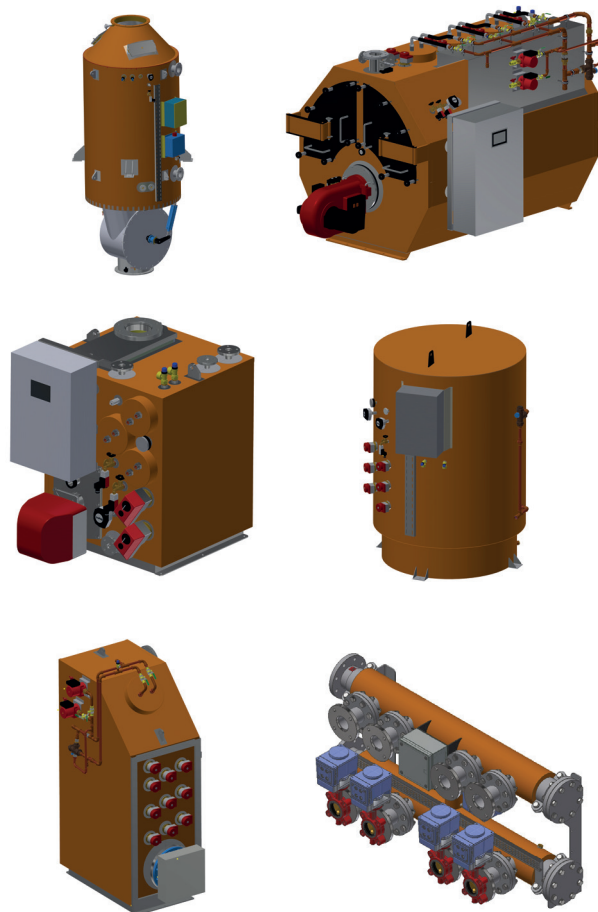
Increase the performance and extend the life time of your equipment in order to save cost.

FEATURES

- Service engineer onboard
- Full check of equipment
- Replacement of components, if necessary
- Cleaning and adjustment
- Upgrade of equipment
- Onboard training of crew

BENEFITS

- Extends the lifetime of the equipment
- Increases performance
- Ensures a safe operation
- Get the newest technology





**ULMATEC
PYRO**

THE SERVICE WILL CONSIST OF

- Test of safety functions.
- Clean internal tubes for soot (soot will reduce the performance considerably, 3mm of soot results in a heat loss of abt. 40%).
- Oil supply line (filter etc).
- Components check of the burner.
- Spark Arrestor.
- Check pressure settings.
- Control of door gaskets and door isolation.
- Cabling and wiring.
- Check Eletrical heating elements.
- Adjust the oil burner settings with exhaust gas analyser (if burner burning with to much air you can reduce loss up to 5 %).
- Check burner plate and isolating ring.

RETROFIT POSSIBILITIES

- Opportunities for upgrading to new burner for optimization of combustion.
- Mounting fuel flow meter to control fuel consumption.
- Retrofit turbulators in burner pipes for a higher efficiency (not possible for all models).
- Retrofit with more electric elements in order to increase efficiency.
- Upgrade of Control system with a 7" touch, ready with modbus TCP communication.

Our Service engineer will bring along all the necessary spare parts in order to be able to carry out the maintenance in just one visit!

Please contact us for a competitive offer.

ULMATEC PYRO AS

Hamnsundvegen 370
6280 SØVIK, NORWAY

Phone: +47 70 20 98 70

Fax: +47 70 20 98 90

Email: pyro@ulmatec.no

■ www.ulmatec.no